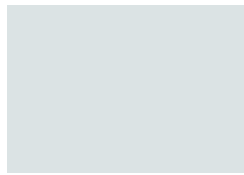


# COLOR CHART



ZINCALUME® Plus



Winter White



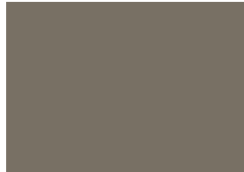
Surf White



Light Stone



Desert Beige



Taupe



Chestnut Brown



Classic Brown



Matte Black



Canyon Red



Rustic Red



Old Town Gray



Old Zinc Gray



Weathered Copper



Slate Gray



Tahoe Blue



Everglade



Denali Green



Cypress Green



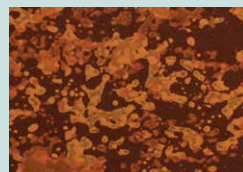
Forest Green



Copper Penny  
(Premium Color)



Natural Rust  
(Premium Color)



Burnt Rust  
(Premium Color)

## PREMIUM COLORS

Premium colors are subject to upcharge. Please note these colors are batch sensitive (may have color variation) and are directional in nature. Different batches are not to be mixed on projects. We recommend that you request a sample of current stocked material to review actual color before ordering to ensure color accuracy. We are not responsible for color variations.

Not all colors and profiles are available at all locations.  
Please see availability chart on back for details.



**REPRESENTATION OF COLORS MAY VARY DUE TO PRINTING LIMITATIONS.**

Sample color chips are available upon request. Consult your ASC Building Products representative for more information.

Customer Service Centers

Salem OR: 503-390-7174 or 800-272-7023 | Spokane WA: 509-536-4097 or 800-776-8771

[www.ascbp.com](http://www.ascbp.com)

# PRODUCT DETAILS AND SPECS



## Cool DURA TECH<sup>XL</sup>

**KEEPS THE HEAT OUT  
AND THE COLOR BRILLIANT**

Superior color retention and resistance to chalk and fade.

Dura Tech *xl* energy saving cool colors reduce the demand for energy.

This premium paint system is ideal for residential applications.



### ROBUST ECONOMICAL PAINT SYSTEM

Chalk and fade with ratings similar to a PVDF.

Engineered to resist peeling or cracking for 25 years.

29 gauge steel with a .2-.3 primer thickness and a nominal 1 mil total dry film thickness over a galvanized substrate.

## Cool DURA TECH<sup>nt</sup>

**ENERGY SAVING COOL COLORS**

Superior performance in harsh environments.

Combines the corrosion protection of ZINCALUME<sup>®</sup> with a highly durable cool resin technology.

Reduce the demand for energy and provides excellent color retention.



ASC Building Products is Proudly Distributed by:

Color, Gauge, and Paint System	12" Skyline Roofing <sup>®</sup>	16" Skyline Roofing <sup>®</sup>	2 1/2" Corrugated	Delta Rib <sup>™</sup>	Nor-Clad <sup>®</sup>	Strata Rib <sup>®</sup>	Delta Rib <sup>™</sup> III	PBR Panel
Dura Tech <sup>™</sup> ...	<i>xl</i>		<i>xl</i>		<i>xl</i>	CG25*		<i>nt</i>
Canyon Red					29ga			
Chestnut Brown	26ga	26ga <sup>3</sup>	29ga	29ga	29ga	29ga <sup>2</sup>	26ga	
Classic Brown		26ga <sup>3</sup>	29ga & 26ga	29ga				
Cypress Green	26ga	26ga			29ga			
Denali Green	26ga	26ga	29ga & 26ga	29ga & 26ga	29ga <sup>5</sup>	26ga		
Desert Beige			29ga & 26ga	29ga	29ga <sup>6</sup>	26ga		
Everglade		26ga		29ga				
Forest Green	26ga	26ga	26ga	29ga	29ga <sup>2</sup>			
Light Stone		26ga <sup>3</sup>			29ga	26ga		
Matte Black		26ga <sup>3</sup>			29ga <sup>3</sup>			
Old Town Gray			29ga & 26ga	29ga	29ga <sup>2</sup>	26ga		
Old Zinc Gray	26ga	26ga						
Rustic Red	26ga	26ga	29ga & 26ga	29ga	29ga <sup>2</sup>			
Slate Gray	26ga	26ga	29ga <sup>1</sup>	29ga				
Surf White					29ga <sup>6</sup>		26ga	
Tahoe Blue	26ga	26ga	29ga <sup>4</sup>	29ga & 26ga <sup>2</sup>	29ga <sup>2</sup>			
Taupe	26ga			29ga				
Weathered Copper	26ga	26ga		29ga & 26ga			26ga	
Winter White		26ga <sup>5</sup>	29ga & 26ga	29ga & 26ga	29ga <sup>2</sup>	26ga <sup>3</sup>		
ZINCALUME <sup>®</sup> Plus <sup>7</sup>		26ga	29ga & 26ga	29ga & 26ga			26ga	
Galvanized G90 Plus							26ga	

Premium Colors (Subject to upcharge)	
Copper Penny	26ga - 16" Skyline Roofing 29ga <sup>6</sup> - Strata Rib, Nor-Clad, Delta Rib III
Natural Rust	29ga - Strata Rib, Nor-Clad from Spokane, WA.
Burnt Rust	29ga - Nor-Clad, Delta Rib III from Salem, OR.

Product, Gauge and Manufacturing Location	Anchorage, AK	Sacramento, CA	Salem, OR	Spokane, WA
12" Skyline Roofing			26ga	
16" Skyline Roofing	26ga	26ga	26ga	26ga
2 1/2" Corrugated		29ga & 26ga		
Delta Rib (24")		29ga & 26ga	29ga	29ga
Nor-Clad	29ga		29ga & 26ga	29ga
Strata Rib	29ga	29ga & 26ga		29ga
Delta Rib III (36")			29ga & 26ga	
PBR Panel		26ga		26ga

Additional lead times apply on products supplied from a non-local facility.

#### NOTES:

- (1) Only available from Sacramento, CA.
- (2) Not available from Sacramento, CA.
- (3) Not available from Anchorage, AK.
- (4) Only available in Delta Rib from Salem, OR. and Spokane, WA.
- (5) Available from Salem, OR. only
- (6) Not available from Sacramento, CA. or Anchorage, AK.
- (7) Unpainted
- (8) G90 only
- (9) Only available in Delta Rib III and Nor-Clad from Salem, OR.

\* ColorGuard 25 with Spectrascape<sup>®</sup>