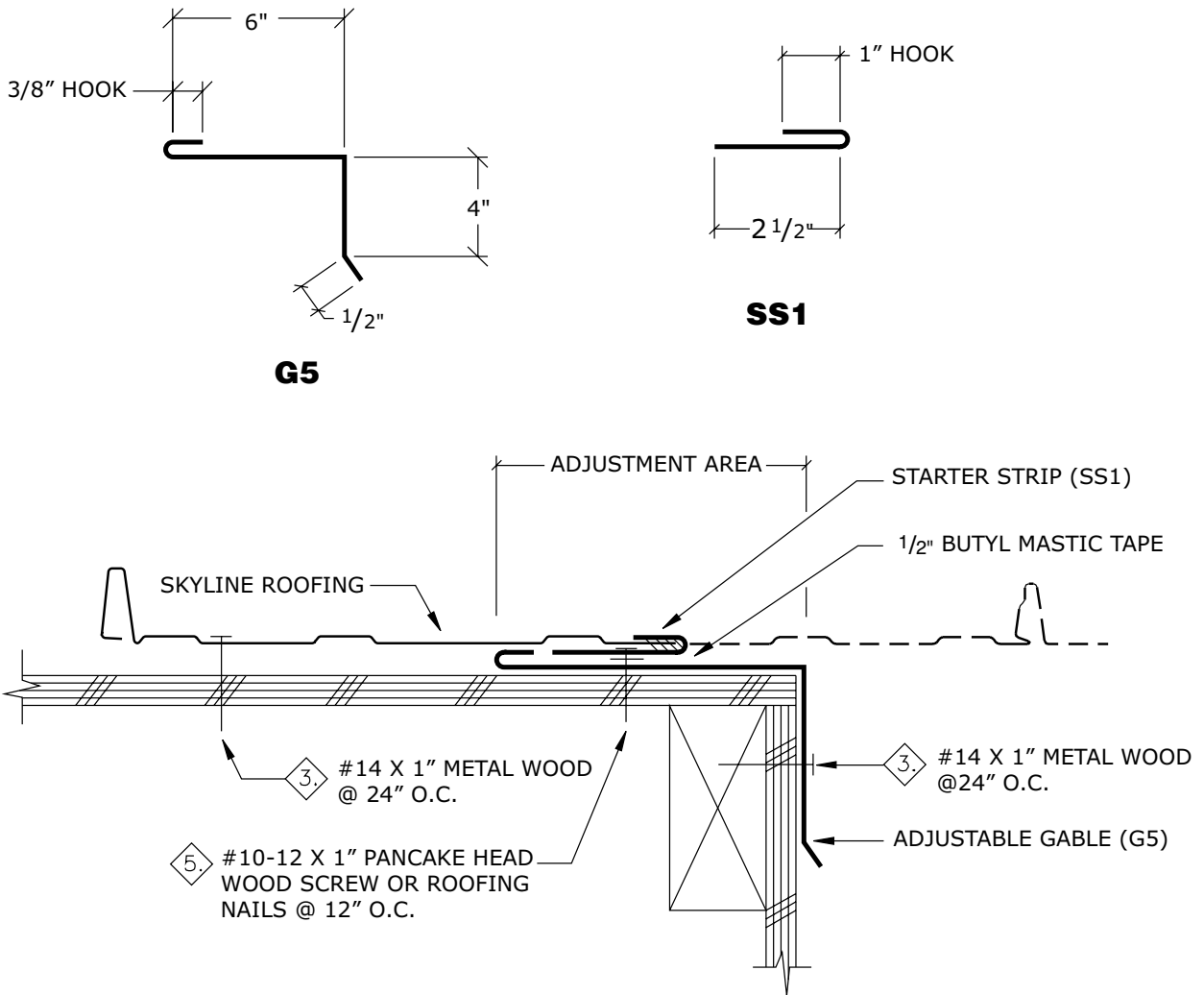


Adjustable Gable Flashing

Note: This flashing must be installed prior to the panels.



Procedures

- Attach the adjustable gable "G5" using #14 x 1" Metal-Wood screws spaced at 24" o.c.
- Place one row of butyl mastic tape between adjustable gable "G5" and starter strip "SS1".
- Fasten starter strip "SS1" with #10-12 x 1" pancake head wood screw or roofing nails 12" o.c.
- Caulk (ProSeal 34 is recommended) and lap the flashing a minimum of 3" o.c. hooking the hem. (See pg. 48).
- Field cut, caulk (ProSeal 34 is recommended), and attach the panels and fasten using #14 x 1" Metal-Woods at 24" o.c.
- Adjustable gable "G5" is to be used with standard eave "E17". (See pg. 16).
- See Chalet Gable Flashing, page 36, for additional notes.