



~Limited~
Lifetime
Warranty
DURA TECH x/

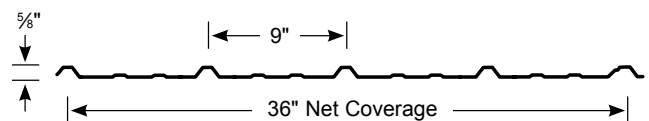
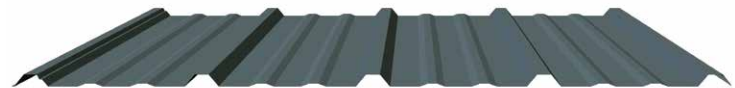
Nor-Clad

**STANDING BY OUR PRODUCTS
AND WARRANTIES FOR 40 YEARS**

Nor-Clad panel is a light gauge, exposed fastener panel with 36" coverage used in residential roof and wall applications.

FEATURES AND BENEFITS

- Available in our Dura Tech™ x/ paint system or our ZINCALUME® Plus finish for unpainted applications; limited lifetime warranty available on residential applications.
- ColorGuard 25 with Spectrascape® available with a 25 year limited warranty for your agricultural, post frame and recreational building applications.
- Specialty prints available in 29ga as a standard offer.
- Offered as a Liner Panel in a economical polyester paint system. Available in Light Stone and Winter White.
- Weather-resistant lap system with anti-siphon groove provides better weathertightness compared to most other light gauge, exposed fastener panels.
- Available in durable polycarbonate skylight panels.
- Economical standard and custom trim packages available with every order.
- Product is UL Class A Fire Rated when installed in accordance with UL requirements.
- Building Code Approval Report: #ER-0550



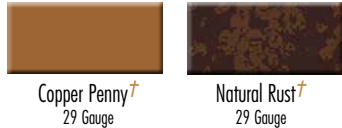
Cool DURA TECH XL

COOL Dura Tech xl keeps the heat out and the color brilliant.

- Superior color retention and resistance to chalk and fade.
- Dura Tech xl energy saving **COOL** colors reduce the demand for energy.



Premium Colors (The premium colors below are subject to upcharge)



† Please note these colors are batch sensitive (may have color variation) and are directional in nature. Different batches are not to be mixed on projects. We recommend that you request a sample of current stocked material to review actual color before ordering to ensure color accuracy. We are not responsible for color variations.

LOAD TABLE

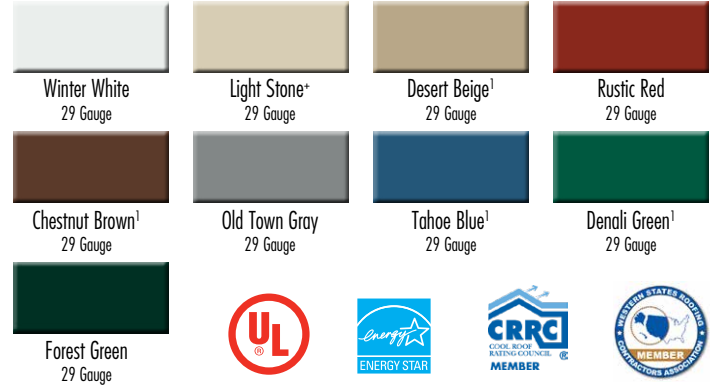
Gauge	Span	Cond.	Positive (Inward) Uniform Load Capacity (lbs/ft²) / Span (ft.-in.)								
			16"	2'-0"	2'-6"	3'-0"	3'-6"	4'-0"	4'-6"	5'-0"	6'-0"
29	Single Span	ASD, W/Ω	199	88	56	39	29	22	17	14	10
		L/180	-	87	45	26	16	11	8	6	3
	Double Span	ASD, W/Ω	196	88	57	39	28	22	17	13	9
26	Single Span	ASD, W/Ω	264	117	75	52	38	29	23	19	13
		L/180	-	109	56	32	20	14	10	7	4
	Double Span	ASD, W/Ω	248	111	71	50	36	28	22	17	12
26	Single Span	ASD, W/Ω	307	138	89	61	45	34	27	22	15
		L/180	-	-	-	61	38	26	18	13	8

NOTES:
 Top values based on allowable stress (ASD). Bottom values based on a deflection limit of L/180.
 "-" denotes that the allowable load is limited by the panel stress vs. deflection limit.
 Steel conforms to ASTM A653 (Galvanized) or ASTM A792 (ZINCALUME) structural steel.
 Tabulated values are for positive (inward) uniform loading only.
 Values are based on the American Iron and Steel Institute "Cold Formed Steel Design Manual" (AISI S100-12).
 Refer to ascbp.com for more complete Nor-Clad performance data.

COLORGUARD 25 with Spectrascape

A robust and economical paint system.

- Resistant to chalk and fade with ratings similar to a PVDF.
- Engineered to resist peeling or cracking for 25 years.



Product Availability by Gauge and Location

Location	Anchorage Alaska	Spokane Washington	Salem Oregon
Dura Tech xl	29ga	29ga	29ga & 26ga
ColorGuard 25	29ga	29ga	29ga

Additional lead times apply on products supplied from a non-local facility.

+ ColorGuard 25 Light Stone 29ga available in Salem, OR.

† Not available in Anchorage, AK.

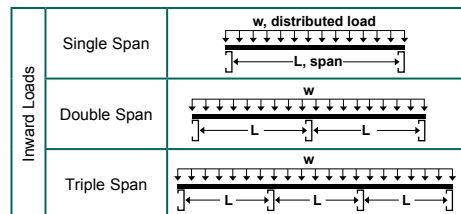
Not all facilities produce product in premium colors. Please allow additional lead time for shipment to other service areas.

REPRESENTATION OF COLORS MAY VARY DUE TO PRINTING LIMITATIONS.

Sample color chips are available upon request. Consult your ASC Building Products representative for more information.

Gauge	Properties							
	Base Steel Thickness (in)	Yield (ksi)	Tensile (ksi)	Wt. (lbs/ft²)	I+ (in⁴/ft)	S+ (in⁴/ft)	I- (in⁴/ft)	S- (in⁴/ft)
29	0.0139	80	82	0.65	0.0080	0.0147	0.0064	0.0149
26	0.0173	80	82	0.81	0.0100	0.0195	0.0098	0.0188

NOTES: The moments of inertia, I+ and I-, presented for determining deflection are: $(2I_{Effective} + I_{Gross})/3$



ASC Building Products is Proudly Distributed by: