

S-5! Snow Retention



S-5! Snow retention products for standing seam and select exposed fastener products!

Snow retention systems help keep snow in place, and allow it to evacuate in a controlled manner. ASC Building Products has partnered with S-5!, to offer customers the following S-5! snow retention systems: ColorGard® 2.0, X-Gard™ 1.0, and X-Gard™ 2.0. These retention systems are available when purchasing ASC Building Products panels and accessories.

ColorGard® 2.0 is a true lay and play system that does not require any pre-assembly before getting on the roof. This bar-type snow guard system matches the roofing color, offering building owners improved design integration. When installed on standing seam roofs, this system affixes to the metal roofing seams with clamps, avoiding the need to drill or screw through the roofing panel, bypassing potential weathertightness issues. Exposed fastener products will require drilling through the panel.

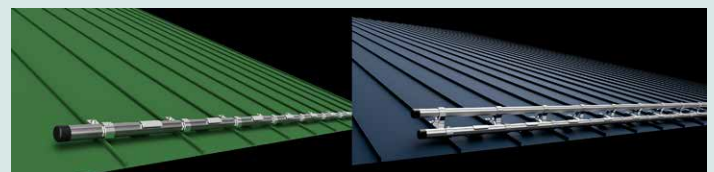
ASC Building Products manufactures a façade strip for The ColorGard system using the same painted metal as the roofing product, ensuring optimum color integration and consistent color aging.

X-Gard™ 1.0 and X-Gard™ 2.0 are heavy-duty, one or two-pipe snow retention systems. Fence-type systems offer higher performance due to superior beam strength, making them ideal for regions with extreme snow. Their tubular, metallic appearance may be more suitable for select design aesthetics. These systems attach to the standing seam panels using the same non-penetrating clamp design as the ColorGard system.

For more information on the ColorGard® 2.0, X-Gard™ 1.0, or X-Gard™ 2.0 snow retention systems visit S-5.com.



ColorGard® 2.0 Snow Guard Rail
Color-matched snow retention system



X-Gard™ 1.0 & 2.0 Snow Guard Rails
One & Two-pipe snow retention systems

S-5! Snow Retention



SNOW GUARD PRODUCT HARDWARE - Each installation will require three primary components - the snow retention rail, the roof clamp that attaches to the metal roof, and snow clips that block the movement of snow and ice beneath the snow rail. Please visit S-5.com for further product resources, including the product configurator, to identify which components are required for your project.

ColorGard® 2.0 Snow Guard Rail System

Snow Retention Rail*





ColorGard Snow Retention Guard (available as punched or unpunched)

Color Strip (Dura Tech® xl or Dura Tech® 5000 color matched)

ColorGard Splice (for connecting 2+ rails)



Roofing Clamp

Design Span® hp	S-5-S	
Skyline Roofing® & Skyline Roofing® hp	S-5-N	
Nor-Clad®, Strata Rib®, PBR Panel, Delta Rib™ & Delta Rib™ III	VersaBracket™ 47	
Nu-Wave® Corrugated	CorruBracket™	

Clip

Skyline Roofing® & Skyline Roofing® hp	SnoClip 2.0 II	
Design Span® hp	SnoClip 2.0 III	
Nor-Clad®, Strata Rib®, PBR Panel, Delta Rib™ & Delta Rib™ III	VersaClip 2.0	

X-Gard™ 1.0 or 2.0 Snow Guard Rail System

Snow Retention Rail

One-pipe system using NEX® 1.0, or Two-pipe system using NEX® 2.0




X-Gard 1.0 or 2.0 Bracket

X-Gard Splice (for connecting 2+ rails)

X-Gard Endcaps



Roofing Clamp

Design Span® hp	S-5-S	
Skyline Roofing® & Skyline Roofing® hp	S-5-N	
Clip		
Design Span® hp, Skyline Roofing® & Skyline Roofing® hp	X-Clip II	

* Punched snow retention guards are suitable for standing seam products with seams at intervals divisible by 4" (e.g. 12" and 16"). For exposed fastener panels and other standing seam profiles a non-punched guard should be selected. See S-5.com for details.

For more information on the ColorGard® 2.0, X-Gard™ 1.0, or X-Gard™ 2.0 snow retention systems visit S-5.com.

